

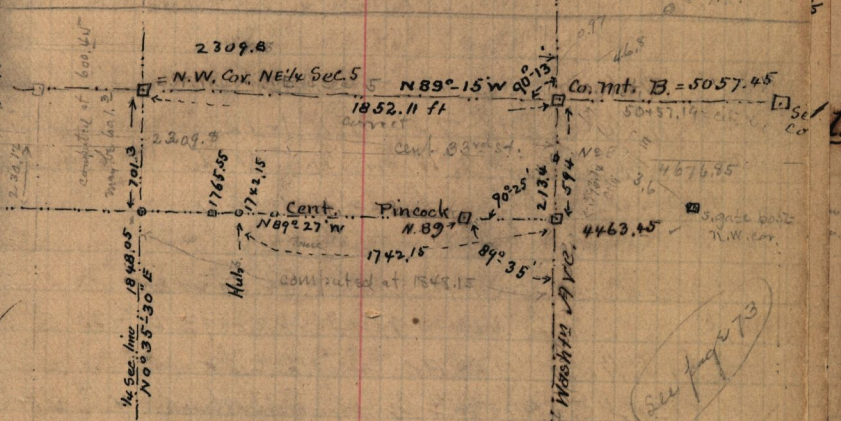
N.E. 1/4. Sec. 5 T. 5. N. R. 1. W.

— Dec 29 - 1891

- 2-90 - Purch to Isaac Furness - Beg. on N. line
 of 1/4 Sec. 6. 15 ch N 0° 35' 30" E. from S. T. cor, 709.35
 E 7.52 ch along N. line 1/4 Sec. 7. 12° 35' 0" E 5.04 ch
 N 14° 36' W 2.45 ch N 11° 23' E 19.2 ch E. 7.9
 ch S 0° 58' W 9.28 ch S 87° 46' 30" E 8.98 ch,
 S 54° 43' 30" E 1.971 ch, S 70° 56' E 5.395 ch to
 cont. S. T. S 38° 21' W 11.216 ch N 51° 12' W 6.516
 N 87° 26' W 12.54 ch to beg.
- 501 - Purch to Geo. Dawson *expired*

A. Cont. B. 2. 2. 2. 2. 2.

H. House



See page 273

Ties to N. 89° Centre
 N. line Wash. Ave
 Pincock Lane, N. E. 32.2 F.P. blazed
 S. 33.65 F.P. S. E. 31.45 trees.
 S. W. 46.70 trees
 Centre Wash. Ave. Sta.

Co. Mt. B. Mon. E.
 N 2 48 Sta = 3407.2
 according to City
 Sta = 34406.93

Hub. at 77+92 in center Pincock
 ties bring to hub. on Sta 77+92 in cent Pincock = N. W 43.6
 to 4th Post South blazed. N. E. 1/4 base, E. post.

Co. Mt B = Sta 5057.13 on City Records